



# WEAPON SYSTEMS



**EXPLOSIVES**





## TIME FUZE

**SKU:** WS-EX-E-1476

Mechanical, electrical, and powder train-style time fuzes available for various applications.

[Read More](#)



## DETA SHEET EXPLOSIVES

**SKU:** WS-EX-E-1477

PRIMASHEET Flexible Sheet Explosive has been developed to meet your breaching and demolition needs.

[Read More](#)



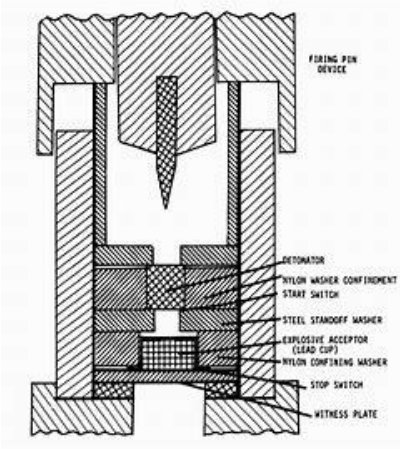
## BOOSTER EXPLOSIVES

**SKU:** WS-EX-E-1478

Dyno Nobel TROJAN Cast Boosters offer reliable initiation of non-detonator-sensitive blasting agents with sizes and configurations for all commercial explosive applications.

[Read More](#)





## M55 DETONATOR

**SKU:** WS-EX-E-1809

The M55 Detonator, a precision-engineered device designed for controlled initiation of explosive charges.

[Read More](#)



## SHEET EXPLOSIVE

**SKU:** WS-EX-E-0802

Unleash the power of controlled demolition with our Sheet Explosive – a cutting-edge and versatile explosive material designed for precision and safety.

[Read More](#)



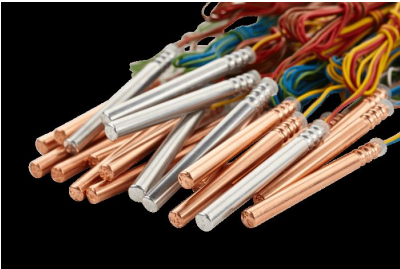
## CHARGE ADHESIVE TAPE

**SKU:** WS-EX-E-1438

Breach Adhesive boasts extraordinary bonding strength, providing a secure and durable connection for a wide range of materials.

[Read More](#)





## ELECTRIC DETONATORS

**SKU:** WS-EX-E-1479

Electric detonators have a long track record of reliability and accuracy proven by generations of blasters.

[Read More](#)



## BREACHING DEVICE

**SKU:** WS-EX-E-1437

The ultimate Android ultra-rugged combination keypad/touch mobile computer, use to streamline processes in warehouses and manufacturing all over the world.

[Read More](#)



## TNT

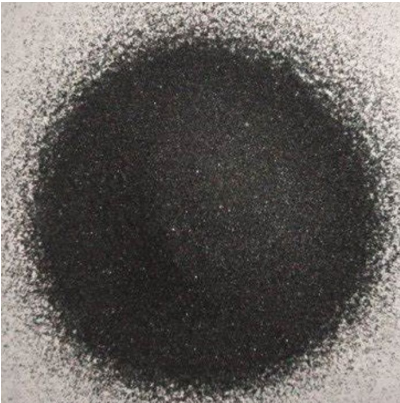
**SKU:** WS-EX-E-1474

Trinitrotoluene, also known as TNT, or more specifically 2,4,6-trinitrotoluene, is a chemical compound of explosives with convenient handling properties.

[Read More](#)







## GUN POWDER

**SKU:** WS-EX-E-1475

Gunpowder for the reloading of ammunition for small arms. A wide array of powders are available, depending on the request and intended application.

[Read More](#)

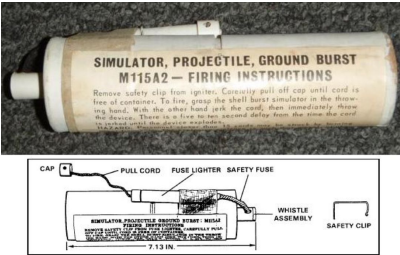


## BREACHERS TAPE

**SKU:** WS-EX-E-0801

Our Breacher's Tape is a double-sided self-adhesive tape explosive. 85% RDX-based, it provides high detonation performance and flexibility with no cracking.

[Read More](#)



## M115A2 GROUND BURST PROJECTILE SIMULATOR

**SKU:** WS-EX-E-1093

The ground burst simulator, M115A2, is used to create battle noises and flash effects during training for personnel to get used to battlefield distractions.

[Read More](#)





## INTEGRAL FIRING DEVICE

**SKU:** WS-EX-E-1216

The Integral Firing Device (IFD-II) is an all-in-one, one-time use shock tube firing system with a delayed detonator in 3.8, 6.4, and 9.6-second delays.

[Read More](#)



## ANTI-PERSONNEL LAND MINE NEUTRALIZATION DEVICE

**SKU:** WS-EX-E-0896

The APLMND system is an Anti-Personnel Land Mine Neutralization Device. The module is laid alongside the AP mine and triggered by a timer starter attached to the module.

[Read More](#)



## SHOCK TUBE

**SKU:** WS-EX-E-1211

Shock tube detonators are non-electric explosive initiators. A small-diameter, hollow plastic tube of any desired length, in which a tiny amount of explosive powder is adhered to, on its inner surface, is affixed with a delay detonator at one or both ends.

[Read More](#)







## DETONATING CORD

**SKU:** WS-EX-E-1195

DETONATING CORD is a flexible linear explosives with a core of PETN explosive encased in a textile outer jacket. They are designed for use as trunk-lines and/or downlines in various applications such as demolition, breaching and EOD.

[Read More](#)



## M81 IGNITER

**SKU:** WS-EX-E-0257

The M81 IGNITER is a hand-held pull type igniter used to initiate shock tube or Time Fuse.

[Read More](#)



# INDEX

## W

WS-EX-E-0257 9  
WS-EX-E-0643 3  
WS-EX-E-0801 7  
WS-EX-E-0802 5  
WS-EX-E-0896 8  
WS-EX-E-1093 7

WS-EX-E-1195 9  
WS-EX-E-1211 8  
WS-EX-E-1216 8  
WS-EX-E-1217 3  
WS-EX-E-1437 6  
WS-EX-E-1438 5  
WS-EX-E-1474 6

WS-EX-E-1475 7  
WS-EX-E-1476 4  
WS-EX-E-1477 4  
WS-EX-E-1478 4  
WS-EX-E-1479 6  
WS-EX-E-1480 3  
WS-EX-E-1809 5